

6 Burton Place, Manchester, Lancashire, M15 4PT
Tel: 0161 637 8336
Email: contactus@ascendproperties.com
www.ascendproperties.com

Ascend

Built on higher standards



Britton House, Lord Street, Manchester

£1,100 PCM

This two-bedroom apartment is right in the heart of the Green Quarter - highly desired by those wanting to live the city life, close to all the action.

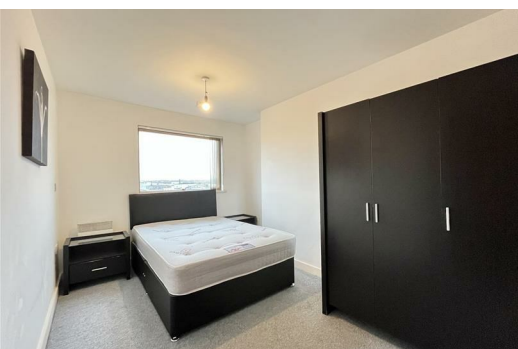
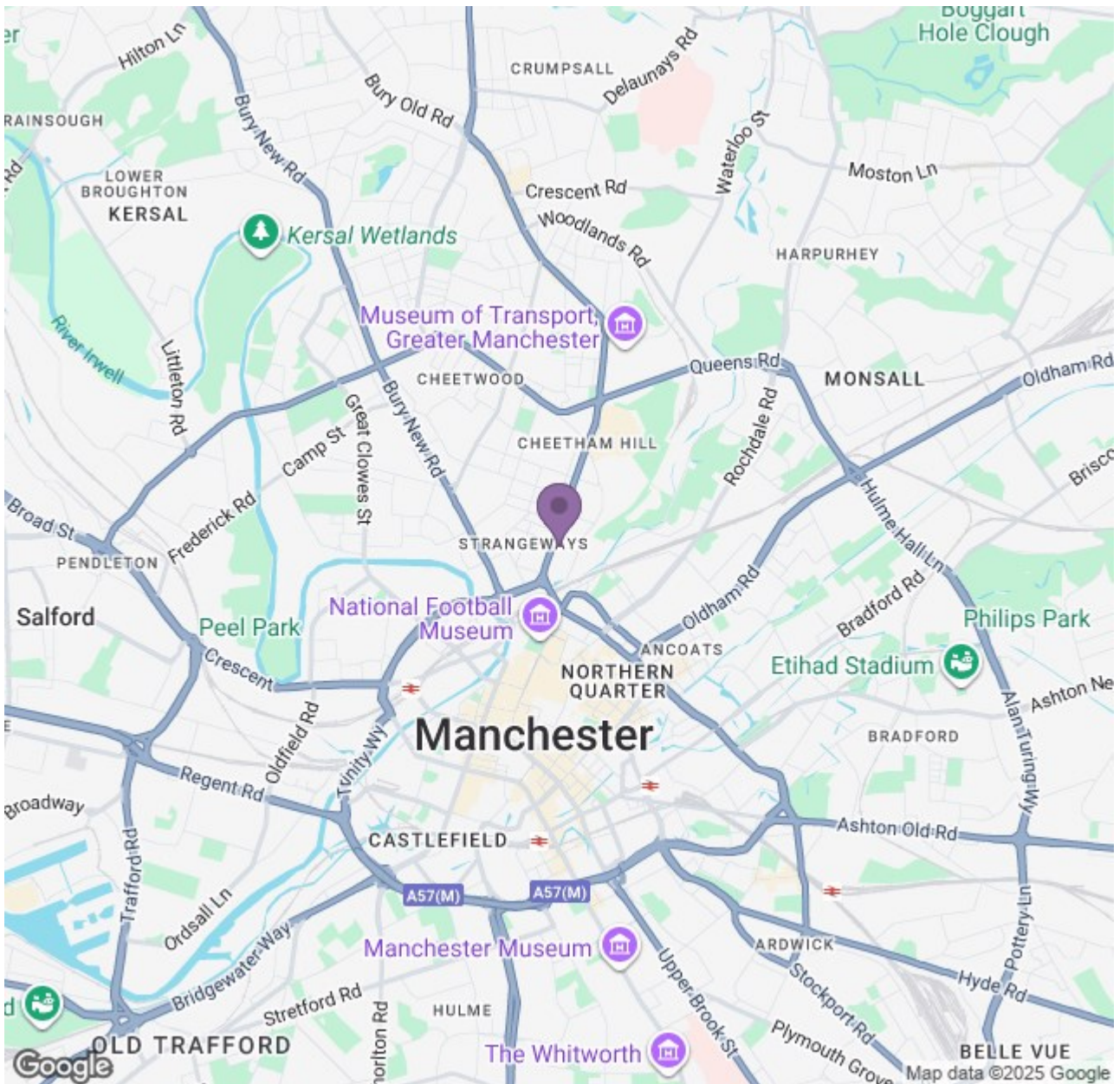
Take a step inside this eye-catching contemporary development and you'll discover an ultra-modern interior, complete with a sleek kitchen and two equally stylish bathrooms. Your open-plan kitchen/lounge has plenty of space for all your get togethers, gatherings and shindigs, and also leads out onto your very own private balcony - perfect for experiencing the breeze and buzz of the city and getting some cracking views of the landscaped gardens. To top it off you'll also benefit from an on-site caretaker - there's not much more you could need.

Here you'll be just a stone's throw from Victoria station and the main ring road is within easy reach too - so travelling to and around the city is an absolute breeze. Fancy a spot of shopping? The Arndale is just a few minutes away too - you really couldn't be more perfectly placed for both work and play.

If you're interested in having a closer look, or have any questions, do get in touch. The pictures for this apartment are for marketing purposes only, so the internal fixtures, fittings and furnishings may vary.

Available Now
Deposit: £1,260
Council Tax Band: D
12 Month Tenancy





Energy Efficiency Rating			Environmental Impact (CO ₂) Rating		
Rating	Score	Band	Rating	Score	Band
A	92	A	A	70	A
B	81	B	B	61	B
C	69	C	C	52	C
D	58	D	D	43	D
E	47	E	E	34	E
F	35	F	F	25	F
G	23	G	G	16	G